

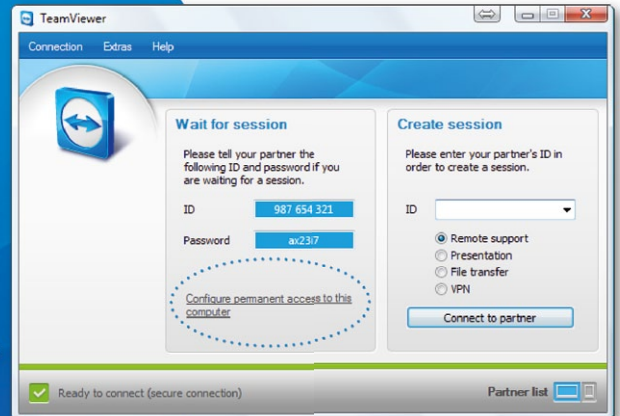


# TeamViewer – Configuring Permanent Access

You want to permanently access a remote computer?  
We show you how to do it in only 3 steps.

## 1 Installation (remote PC)

Install TeamViewer by following the instructions of the installation routine and start TeamViewer.  
Click on “Configure Permanent Access to this computer”.



## 2 Configuration (remote PC)

In the “Password” field, define your personal password and confirm it.

Tip: On PCs that are not intended for outgoing connections, you can install TeamViewer Host instead.



## 3 Establishing the connection

To establish the connection, enter the ID (see Step 1) in the “ID” field. Click on “Connect to partner” and enter the predefined password in the following dialog (see Step 2).

